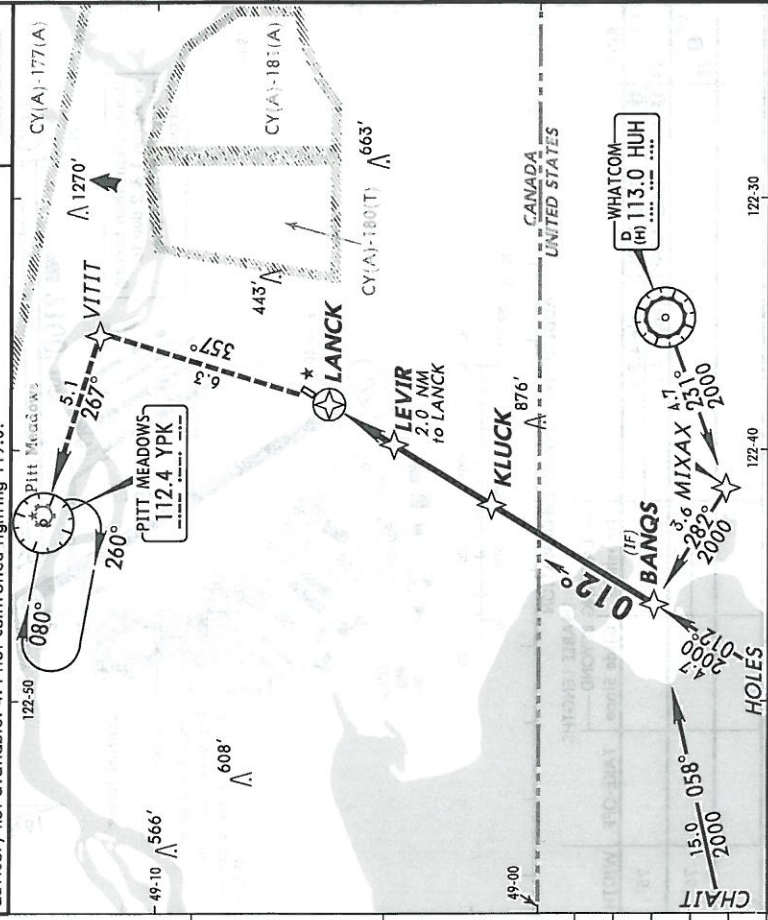


*ATIS 124.5	VICTORIA Terminal (ARR) 132.7	*LANGLEY Tower MF (within 3 NM) 119.0	LANGLEY Traffic MF (within 3 NM) 119.0 when Twr Inop.	*Ground 121.9
RNAV	Final Apch Crs 012°	Minimum Alt (CONDITIONAL) 2000' (1966')	MDA (H) Refer to minimums	Apt Elev 34'
<p>MISSED APCH: Climb direct to VITIT on track 357°. LEFT turn direct YPK VOR on track 267°. Maintain 2000'. Hold on inbound track 080° (Max 175 kts).</p>				



BANQS	KLUCK	LEVIR	LANCK
10.5	5.5	3.0	0.5
10.5	5.0	2.0	0.5
			APT. 34'

MAP at LANK	Lighting - Refer to Airport Chart	D	VITIT on 357°																				
				CIRCLE-TO-LAND																			
<table border="1"> <tr> <td>Max Kts</td> <td colspan="3">MDA (H)</td> </tr> <tr> <td>A 90</td> <td colspan="3"></td> </tr> <tr> <td>B 120</td> <td colspan="3">680' (646')-2</td> </tr> <tr> <td>C 140</td> <td colspan="3"></td> </tr> <tr> <td>D</td> <td colspan="3">NA</td> </tr> </table>				Max Kts	MDA (H)			A 90				B 120	680' (646')-2			C 140				D	NA		
Max Kts	MDA (H)																						
A 90																							
B 120	680' (646')-2																						
C 140																							
D	NA																						

CYNJ

Aprt Elev 34'
N49 06.1 W122 37.8

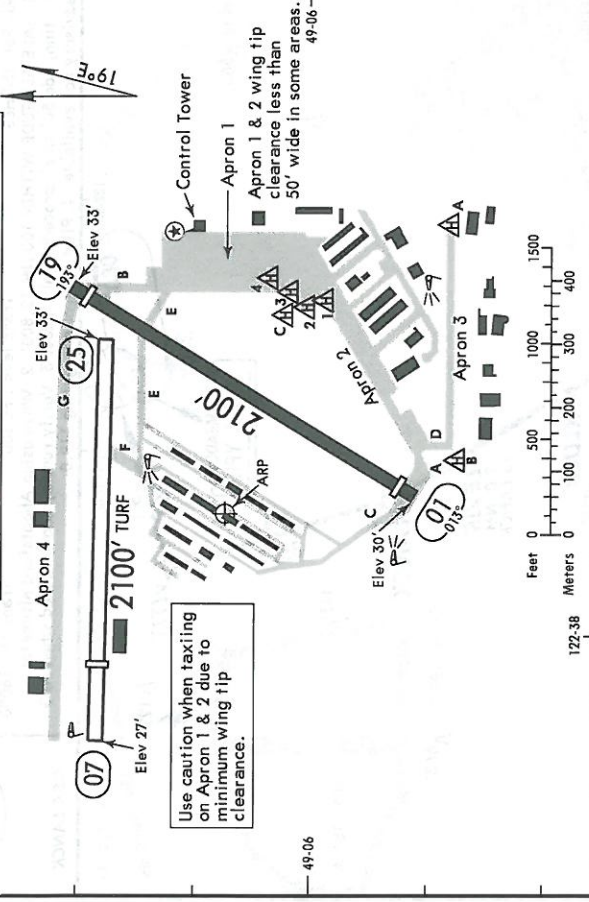
JEPPESEN

6 MAR 09 (12-1) EFT 12 MSEP

LANGLEY, BC
LANGLEY REG

*ATIS	*LANGLEY Ground	*Tower	LANGLEY Traffic MF (within 3 NM)	VICTORIA Terminal (DEP)
124.5	121.9	MF (within 3 NM) 19.0	119.0 when Twr inop.	132.7

122-38
CAUTION: Trees to 100' AGL 250' southeast of pad B. Only pilots familiar with this airport during daylight hours should use the airport during hours of darkness. Airport restricted to a max weight of 12,500 lbs except with airport operator's authorization. Occasional glider activity to 2500' above sea level.



Use caution when taxiing on Apron 1 & 2 due to minimum wing tip clearance.

RWY	ADDITIONAL RUNWAY INFORMATION			USABLE LENGTHS	
	Threshold	BEYOND	GLIDE SLOPE	TAKE-OFF	WIDTH
01	① MIRL ② PAPI-L (angle 4.5°)	2000'	75'		
19	① MIRL ② APAPI-L (angle 4.0°)	1700'	75'		
07	⑤ 25				

- ① Activate on 119.0.
- ② For aircraft with eye-to-wheel height up to 10'.
- ③ No winter maintenance. Rwy soft when wet.

TAKE-OFF & DEPARTURE PROCEDURE	
Rwys 01/19	CAT A, B & C ACFT
Climb visual over airport to 900'. Intercept R-328 inbound to HUH VOR. Maintain 2000' or as assigned.	
A	1
B	1 1/2
C	2
D	NA

49-06